

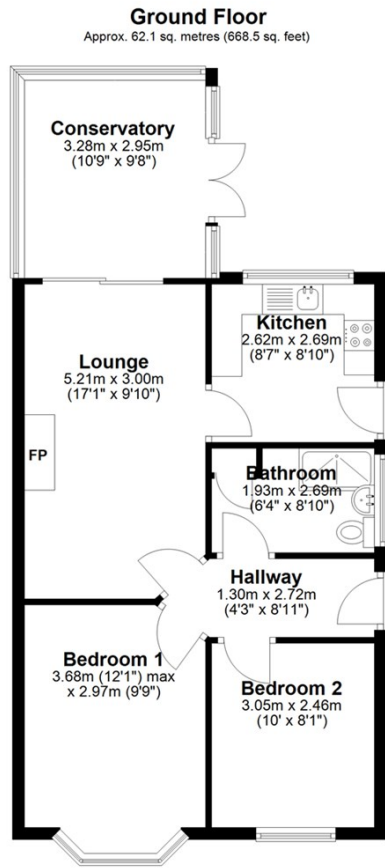


20 BURTON ROAD
SPALDING, PE11 2GE

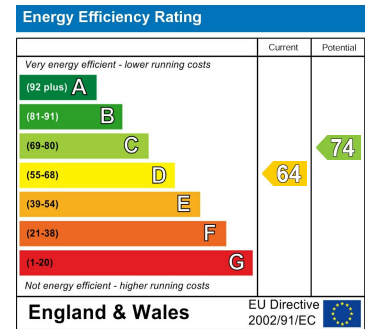
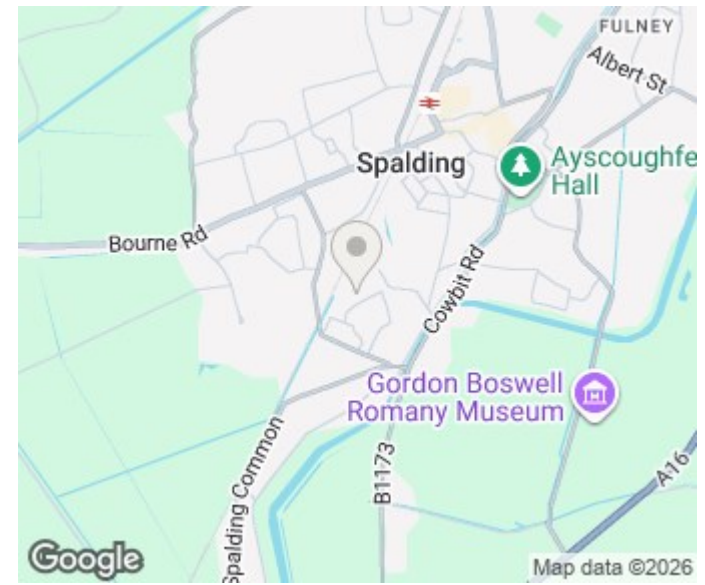
£190,000
FREEHOLD

This well-presented two-bedroom bungalow is offered to the market with vacant possession and no onward chain, making it a straightforward and attractive purchase. Positioned in a quiet cul-de-sac, the property features a spacious lounge diner, a bright conservatory/sun room, and a well-designed kitchen, along with two generous bedrooms and a modern bathroom. Externally, it boasts a good-sized, low-maintenance fully patio rear garden complete with a large shed/summer house, plus driveway parking for 1-2 vehicles. Ideally suited to first-time buyers, investors, or those looking to downsize, this home combines comfortable living with a convenient location close to local amenities and transport links.





Total area: approx. 62.1 sq. metres (668.5 sq. feet)
20 Burton Road



Agents Note: Whilst every care has been taken to prepare these particulars, they are for guidance purposes only. All measurements are approximate and are for general guidance purposes only and whilst every care has been taken to ensure their accuracy, they should not be relied upon and potential buyers/tenants are advised to recheck the measurements

Spalding Office Sales
11 The Crescent
Spalding
Lincolnshire
PE11 1AE

01775 713 888
enquiries@sedge-homes.com
www.sedge-homes.com

